

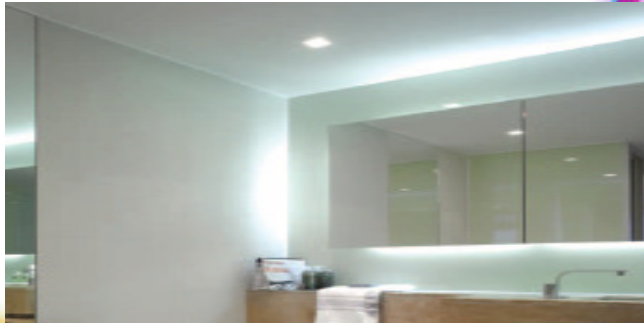
Case & Point

» WAREHOUSE APARTMENT REFURBISHMENT



Overview

- » 14 refurbished apartments in New Street, London (opposite Liverpool Street Station in heart of the City of London)
- » Executive apartments starting at £1.25M
- » 18th Century Warehouse converted to apartments and duplexes
- » Provision of 2 marketing suites and sales team training

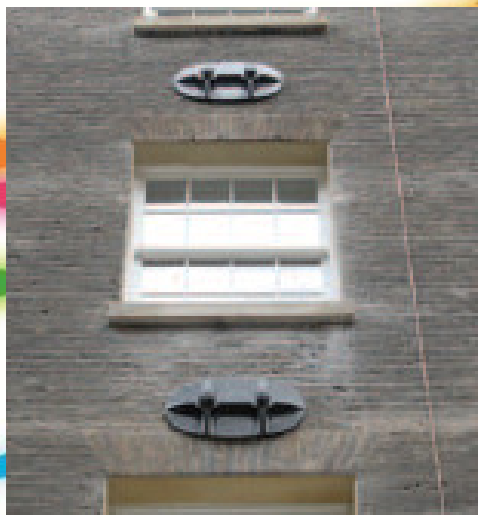
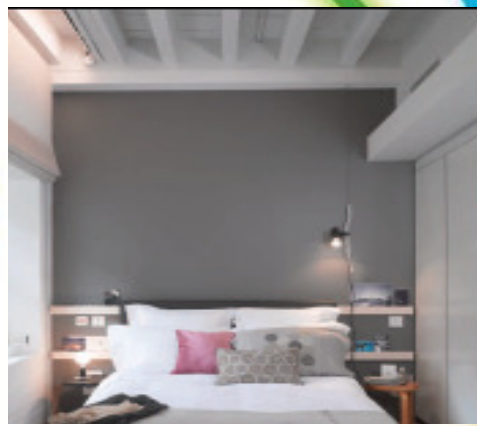


Challenge

To integrate 21st Century technology into an 18th Century building.

1. Involved in the development relatively late and needed to get up to speed quickly
2. Interior treatment (exposed brick and roof trusses) required carefully wiring design and discrete technology selection and placement
3. Needed to provide a simple to use, yet sophisticated, lighting control system to enhance the warehouse space (incorporating dimmable - LED's)
4. Entertainment options to be provided inline with the target market's expectation
5. Home automation flexibility to allow client upgrades like additional dimming and heating control without time consuming and expensive rewiring





Deliverables

Each apartment was equipped with an extremely flexible lighting (KNX) backbone together with an entertainment infrastructure to enjoy multiple sources of music and High Definition TV/video - all in keeping with market expectations.



Creative Lighting Control

The preponderance of LED lights within the kitchen and main lounge area proved a challenge in terms of control with dimming levels and scene setting being catered for within the KNX system. The architects were liaised with in terms of switch design to fit within the overall aesthetic of the interior design.

Scenes and Global off

As the system was wired to every light switch all apartment lights could be switched off at the touch of one button with pre-set mood lighting scenes being programmed into certain flat types.

Blind Control

The same infrastructure which controls the lights also provided blind control capability. Again close liaison with the main electrical contractor ensured that conduit runs were fully utilised to hide wires. The client can therefore, at the touch of a button, call a pre-set lighting scene, drop the blinds and activate the home cinema.

Speakers in the rafters

To ensure minimal intrusion of speakers in exposed beam areas Anthony Gallo units were sourced for their size, quality and colour selection. A star wiring topology ensured that a sound system, with in-room controls, could be fitted to the client's specification. A multi-room audio system was fitted to the show apartment controlled via on-wall keypads and a Philips Pronto remote.

Home Cinema Capability

Early input in the design stage meant that the lounge position for wall mounted flat screen was pre-determined with speakers fitted accordingly.

Future Capabilities

The KNX backbone allows the HVAC, currently on a separate control platform, to be integrated should the client want one place for control. The alarm system can also be integrated to activate lights (& blinds) should an intruder activate the alarm.

Your Space. Your Way.

Edinburgh (Head Office)

Murrayburgh House
17 Corstorphine Road
Edinburgh
EH12 6DD

Tel: 0131 510 1250

Fax: 0131 337 4998

www.hometechintegration.com