

Case & Point

» LARGE NEW BUILD



Overview

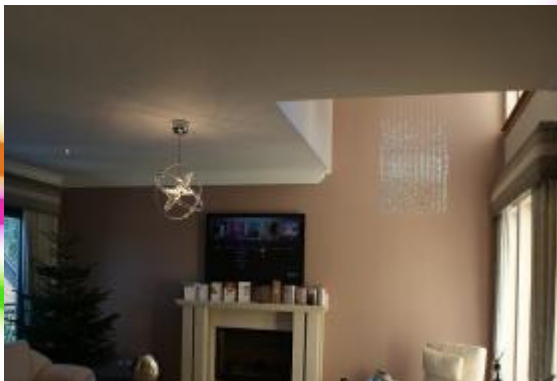
- » 8,000sq ft new build home over 3 floors in outskirts of Falkirk
- » Wiring topology covering data, TV (HD), audio and lighting control.
- » Distribution of 5 High Definition (HD) sources to 4 (of 13) screens and multiple audio sources throughout
- » High Definition Home Cinema system including movie server
- » Whole house lighting providing dimming and scene setting

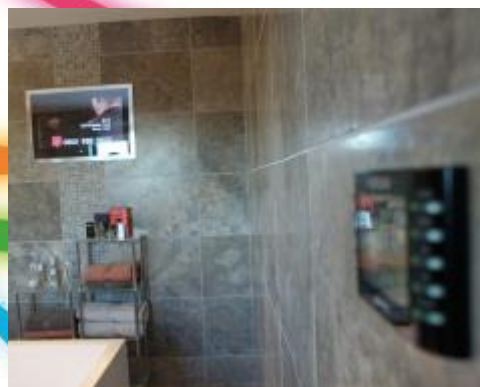


Challenge

To liaise with client, who is not often in the country and deliver a multi sourced, multi-controlled sophisticated lighting and entertainment system for him and his family.

1. Ensure various audio & video sources were available via appropriate controls
2. Client-sourced audio equipment to be integrated
3. Main lounge's interior design demanded no visible speakers
4. Key screens to have HD content accessibility
5. CCTV distribution required to certain key screens
6. Lighting control required of client's globally sourced fittings— certain areas to be dimmed and scene set





Deliverables

A bespoke Crestron system, based on the Crestron DM (Digital Media) back bone, was designed with the clients brief as the driver.

A flexible lighting (KNX) topology was designed and installed to provide public room dimming, scene setting as well as a global off.



kaleidescape®



High Definition (HD) Content

HD content via 5 sources (2 SKY Boxes, Kaleidescape Player, Blu-Ray and an Apple TV) was sent, via a HD matrix, to 5 screens. CCTV cameras utilised as a source within system. Icon design within each keypad made identification and control simple.

Stand Alone TV Sources

Local Blu-Ray players were connected out with the HD distribution system in areas where children's film watching was a priority.

Lighting Scenes and Global off

A KNX system was used for scene setting & dimming in public areas and switching to others. "Global off" provided at main entrance

Control

Wall mounted and hand-held remote units utilised, with the public and master bedroom areas having the latest Crestron 4-SM colour touch screen in-wall controls with proximity sensors. A hierarchy of importance dictated that guestrooms had more cost effective control (Cameo keypads).

Music

A separate iPod for each floor was connected to the system with guest bedrooms having local iPod docs and control. Crestron on-wall, or remote, control provided track data. Specific equipment for pool and sauna areas was sourced and installed.

Hidden Speakers—Lounge

Four Amina plaster-over speakers were used to provide 'invisible' stereo audio. An extra point was provided should the client wish to add a further speaker to upgrade to a surround sound system.

Dedicated Home Cinema

Clients own projector integrated into a Denon - based 5.1 surround sound with a 80" fixed DNP Screen. 2 Terabyte Kaleidescape movie-server controlled via remote control.

Future Capabilities

Further scene setting/dimming, integration of AV/security, heating control and blind automation easily upgradable at some future point.

Your Space. Your Way.

Edinburgh (Head Office)

Murrayburgh House

17 Corstorphine Road

Edinburgh

EH12 6DD

Tel: 0131 510 1250

Fax: 0131 337 4998

www.hometechintegration.com